

Seed & Feed

Perennial Ryegrass #1 Choice For Late Spring Seeding

Perennial ryegrass is a specie that establishes extremely fast. It is aggressive enough to establish a grazeable pasture in less than 7 weeks. This is weeks faster than other species such as orchardgrass, tall fescue or bromegrass. In addition to its quick establishment, perennial ryegrass provides highly digestible forage. Digestibility can exceed 0.90 Nel, while protein levels are in the 20's.

Not all perennial ryegrass varieties are winter-hardy. Only recently, winter-hardy varieties have become available to the market. The latest release is 'Mara', a variety bred in the very cold area of Romania. Mara out-yielded all other varieties and species in the 2001 forage trial in Michigan. This trial was noted as one of considerable droughty conditions. This makes it even more remarkable that Mara proved to be the best performing variety. Mara is the main component of BG-34.

DOVEY - The Fast Establishing, Endophyte-Free Tall Fescue

Dovey is recognized around the world as a quick establishing, high yielding, persistent and livestock safe fescue. Dovey tall fescue provides a valid economical solution to Southern Grass Farmers searching for a perennial grass without the problems normally associated with fescue. Dovey has excellent forage quality and is free of toxic alkaloids.

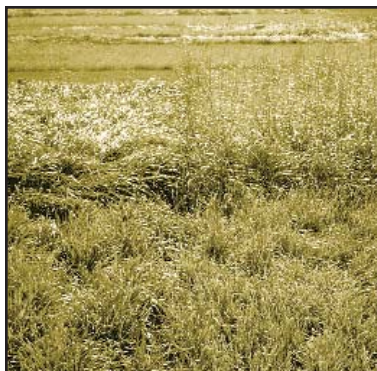
Dovey's superior seedling vigor allows it to establish quicker than other varieties of fescue. The University of Kentucky research rated Dovey as the fastest establishing of all tall fescue varieties tested. The yield potential is second to none as proven in official forage trials performed in Missouri and Oklahoma.

Dovey has proven to be the most persistent of the endophyte-free varieties and even more heat and drought tolerant than endophyte infected Kentucky-31. This extraordinary trait was also observed at The Noble Foundation in Ardmore, Oklahoma after two extremely dry summers.

Dovey is free of potential harmful endophytes. This makes Dovey completely safe for any kind of livestock including brood mares and cows. The lack of endophytes not only increases the palatability of Dovey, it also significantly increases animal performance.

Green Spirit Italian Ryegrass: A Perfect Emergency Feed

Italian ryegrass is the perfect grass specie to plant in the spring to boost forage production. Planted in the spring, Green Spirit Italian ryegrass will not produce a seed head during the first year (see picture). This means high quality forage with very low lignin and high relative feed values. Green Spirit Italian ryegrass can be successfully grazed or cut for haylage or grass silage. Green Spirit can be planted in the fall as a high quality alternative to small grains (rye or wheat). Green Spirit is also being used to overseed older, worn out alfalfa fields.



Green Spirit (left) does not head out, unlike annual ryegrass (right).

Seed & Feed is a publication of Barenbrug USA. If you would like to learn more about the articles or products, please contact us:

Phone: 1.800.547.4101

Email: info@barusa.com

Web: www.barusa.com

BARENBRUG

Great in Grass®