

StockMaster® Pro

Multi-Purpose Forage Mixture



Rapid Establishment



Get-PLUS Technology



Improved Yields

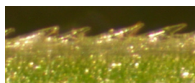
Key features

- Rapid Establishment
- Dense Sward
- Low growing point - Tolerates traffic and grazing pressure
- Excellent source of digestible fiber
- High dry matter production

Seeding Rate

Seeding rate:	25-30 lbs/acre
No-till Seeding Rate:	25-30 lbs/acre
Broadcast Seeding Rate:	35-40 lbs/acre

See the Soft-leaf difference



Common Tall Fescue



Soft Leaf Tall Fescue

This formulation contains a late maturing orchardgrass, a newly developed variety of winter-hardy continental tall fescue, and our two Get PLUS modern grasses, BarOptima® +E34® soft leaf tall fescue, and Remington™ +NEA2™ perennial ryegrass.

This multi-purpose mixture enables StockMaster Pro to be used in, and even under, less than ideal conditions. It is a perfect mixture for smaller acreage fields that require a long lasting, high quality pasture and can also be used for hay fields after establishment.

Technical Information

Uses

StockMaster Pro is a dependable, multi-purpose forage mixture. StockMaster Pro provides a palatable, digestible forage mixture which is an ideal pasture mixture for cattle, sheep, goats, llamas, alpacas, and horses. StockMaster Pro is formulated with improved varieties of perennial ryegrass, tall fescue, and orchardgrass. Perennial ryegrass establishes rapidly, performs well in a grazing situation, and is highly palatable and digestible. Improved varieties of tall fescue contribute persistence, winter-hardiness, drought tolerance, and are an excellent source of digestible fiber. Orchardgrass is highly palatable and digestible and provides quality feed into the summer months. StockMaster Pro is also suited for high-moisture cutting and hay production.

Establishment

In moderate climates or in hot, dry areas with irrigation, StockMaster Pro can be planted in spring or early fall. In regions prone to summer drought, fall sowing is recommended. To ensure good establishment, a balanced fertilizer such as 100 lbs/acre of 20-20-20 (N-P-K) should be applied at planting. StockMaster Pro can be established via full cultivation, no-till, or broadcast seeding. A well-prepared, firm seedbed is ideal for sowing. Recommended planting depth is 1/8 to 1/4 inch. StockMaster Pro's seedling vigor and rapid establishment make it suited to no-till or broadcast seedings. After broadcasting, a light harrowing and rolling improves seed-to-soil contact and promotes establishment. StockMaster Pro can also be used to improve stand density of existing pastures; plant via no-till drill or broadcast seeding. For broadcasting smaller areas, it is appropriate to broadcast and allow the animals to "hoof" plant the seed.



Technical Information

Management

To maximize tiller growth during the first year, pasture height should be maintained in the 3 to 10 inch range. Once the newly seeded plants are firmly rooted, they should be lightly grazed or machine mowed several times before heavy use. Once established, Horsemaster produces a persistent pasture. Proper grazing management and rest periods will promote optimal forage production and maintain a dense, vegetative stand. Let your pasture grow to a height of 6 inches and then graze or mow to a 3 inch height. The addition of a white clover, such as Barbican, at a seeding rate of 2-3 lbs/acre, will provide a source of available nitrogen which will improve pasture fertility and enhance feed value.

Get PLUS® Technology

BarOptima® +E34® - Soft Leaf Tall Fescue

A soft leaf tall fescue that contains the beneficial endophyte, E34. This revolutionary tall fescue has improved palatability with the soft leaf, all while eliminating toxicity and increasing animal productivity. As a soft leaf tall fescue, BarOptima +E34 contains three highly desirable traits: a high-quality forage, yield, and persistence. BarOptima PLUS E34 is *Safe, Sustainable, and Profitable*.

Remington +NEA2™ - Perennial Ryegrass

We combined our proven tetraploid perennial ryegrass with the beneficial endophyte, NEA2, to bring you a high yielding, high quality perennial ryegrass sharing many attributes of diploid types. We selected Remington for its sward density, high yields, heat tolerance, excellent disease resistance, and improved winter tolerance compared against traditional cultivars. Remington produces longer into the summer months and is well suited for grazing and high moisture cutting systems. Its exceptional palatability promotes high dry matter intake, while simultaneously providing extremely nutritious and digestible forage. The addition of the NEA2 beneficial endophyte expands this area of adaptation, allowing Remington +NEA2 to persist in regions where perennial ryegrasses typically die out due to summer stress.

Beneficial Endophyte

Our researchers examined alkaloid profiles of numerous endophytes collected from around the world. These selected endophytes were inoculated into different seed germplasm. From this research, we were able to select two beneficial endophytes: "E34" & "NEA2".

Endophyte Life Cycle

Plants with endophytes can only pass the endophyte through their seed. **The endophyte is NOT passed from plant to plant in a pasture.**

1. Endophyte is a fungus found in seed
2. As the seed germinates, the endophyte grows into the emerging shoot
3. It stays in the base of the plant
4. In spring, as stems form, the endophyte grows up into new seed

